

Flute

Kiwi Quickies

Page 2

9 *Night On Bald Mt*  
*f*

10 *Jaws*  
*Slow 2* *Twice as Fast*  
*mf*

11 *Mars*  
*f*

12 *Vader*  
*ff*

13 *Funeral March*  
*mf*

14 *Peter Gunn*

15 *Fox Football*  
*f*

16 *Aqualung*  
*ff*

Clarinet

# Kiwi Quickies

Page 2

9 *Night On Bald Mt*

10 *Jaws*  
Slow  
Twice as Fast

11 *Mars*

12 *Vader*

13 *Funeral March*

14 *Peter Gunn*

15 *Fox Football*

16 *Aqualung*

# The Quickies

## Page 1

Alto Saxophone

### 1. Konbat Quickie



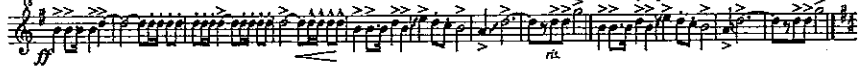
### 2. You Can Call Me Al



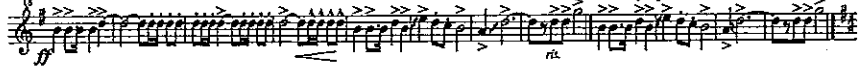
### 3. Rocky



### 4a. Olympic Fanfare Long



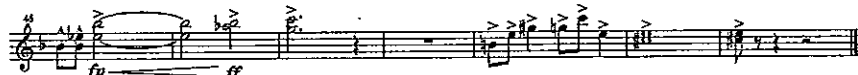
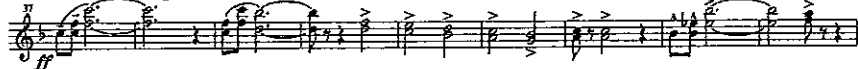
### 4b. Olympic Fanfare Short



### 5. The Olympic Spirit



### 6a. Fanfare for the Long Common Man



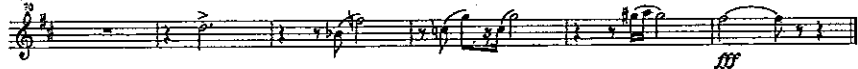
### 6b. Fanfare for the Short Common Man



### 7. Superman



### 8. Power

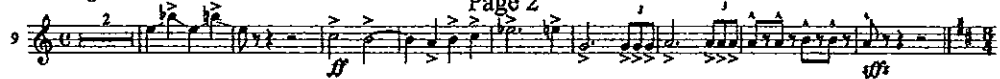


Alto Saxophone

# Kiwi Quickies

Night On Bald Mt

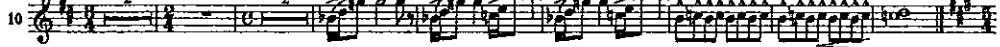
Page 2



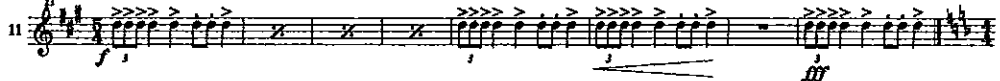
Jaws

Slow

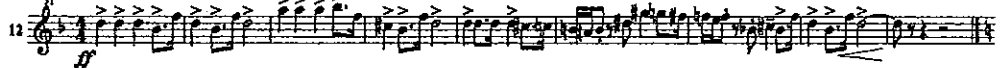
Twice as Fast



Mars



Vader



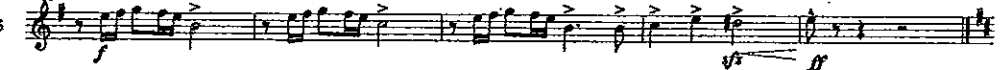
Funeral March



Peter Gunn



Fox Football



Aqualung



# The Quickies

## Page 2

Trumpet 1

9. Night On Bald Mt.

Musical notation for 'Night On Bald Mt.' featuring a treble clef, a key signature of one sharp (F#), and a 2/4 time signature. The piece includes a triplet of eighth notes and a dynamic marking of *ff*.

10. Jaws

Musical notation for 'Jaws' featuring a treble clef, a key signature of one sharp (F#), and a 2/4 time signature. It includes a 'Slow' section followed by a 'Twice as Fast' section and a dynamic marking of *ff*.

11. Mars

Musical notation for 'Mars' featuring a treble clef, a key signature of one sharp (F#), and a 2/4 time signature. It includes a dynamic marking of *f* and a *ff* marking.

12. Vader

Musical notation for 'Vader' featuring a treble clef, a key signature of one sharp (F#), and a 2/4 time signature. It includes a dynamic marking of *ff*.

13. Funeral March

14. Peter Gunn

Musical notation for 'Funeral March' and 'Peter Gunn' featuring a treble clef, a key signature of one sharp (F#), and a 2/4 time signature. It includes a dynamic marking of *ff*.

15. Fox Football

Musical notation for 'Fox Football' featuring a treble clef, a key signature of one sharp (F#), and a 2/4 time signature. It includes a dynamic marking of *f* and a *ff* marking.

16. Aqualung

Musical notation for 'Aqualung' featuring a treble clef, a key signature of one sharp (F#), and a 2/4 time signature. It includes a dynamic marking of *ff*.Musical notation for 'You Can Call Me Al', 'Rocks', 'Olympic Fanfare Long', 'Olympic Fanfare Short', 'The Olympic Spirit', 'Fanfare for the Long Common Man', 'Fanfare for the Short Common Man', and 'Superman' featuring a treble clef, a key signature of one sharp (F#), and a 2/4 time signature. It includes dynamic markings of *f* and *ff*.